



**Electrolux**  
PROFESSIONAL

## Stainless Steel Preparation 1570 mm Stainless Steel Shelving with 4 Solid Shelves

ITEM # \_\_\_\_\_

MODEL # \_\_\_\_\_

NAME # \_\_\_\_\_

SIS # \_\_\_\_\_

AIA # \_\_\_\_\_



132948 (NSC1570)

Stainless steel Shelving with  
4 solid shelves, 1570mm

### Short Form Specification

Item No. \_\_\_\_\_

Made in stainless steel. The two intermediate shelves are height-adjustable. Load capacity per shelf: average of 150 kg/m<sup>2</sup>, evenly distributed.

### Construction

- Designed to bear a maximum total load of 600kg; the load can be positioned at various heights thanks to the shelves.
- Model constructed entirely in stainless steel, with solid stainless steel shelves.
- Heavy duty construction entirely in AISI 304 stainless steel to offer maximum durability.

APPROVAL: \_\_\_\_\_



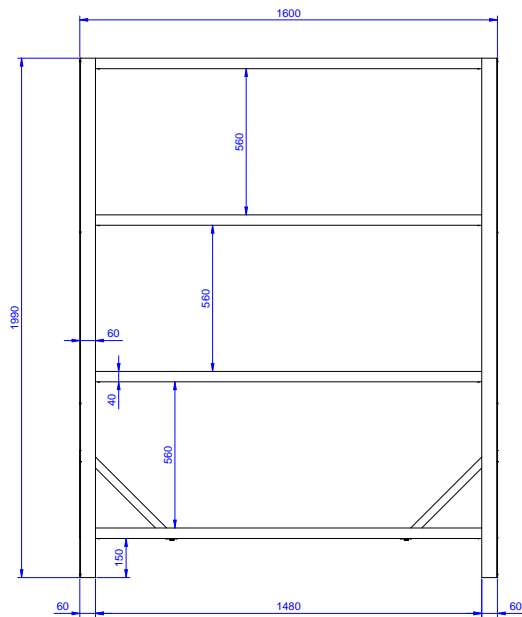
Experience the Excellence  
[www.electroluxprofessional.com](http://www.electroluxprofessional.com)



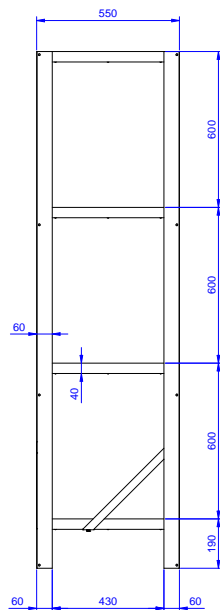
**Electrolux**  
PROFESSIONAL

## Stainless Steel Preparation 1570 mm Stainless Steel Shelving with 4 Solid Shelves

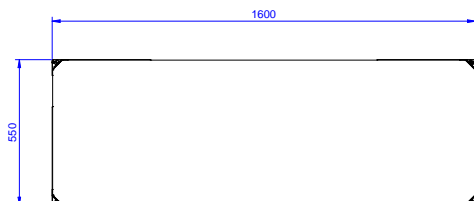
Front



Side



Top



### Key Information:

External dimensions, Width:	
132948 (NSC1570)	1600 mm
External dimensions, Depth:	550 mm
External dimensions, Height:	1990 mm
Max loading weight:	600 Kg kg
Shelves number:	
Net weight:	45 kg

Stainless Steel Preparation  
1570 mm Stainless Steel Shelving with 4 Solid Shelves

The company reserves the right to make modifications to the products without prior notice. All information correct at time of printing.

2025.04.20